

## Highlights

- Simple, two-wire installation
- Simultaneous 4-20 mA and digital output for smart TX sensors
- Compact, rugged sensor with IP 65 rating
- Wide temperature range from -18 to 2000°C
- Advanced signal processing
- Point-to-point or multidrop installation
- Install up to 15 sensors on a single multidrop network
- Windows software for remote configuration and monitoring
- Wide choice of focus distances
- Special models for glass and plastics applications

# TX

## Datasheet



### Electrical Specifications

#### Outputs

Analog	4-20 mA, max. loop resistance 700 Ω
Digital (Smart models)	HART® to RS-232 (with optional adapter)
Alarm (Smart models)	24 V / 150 mA; adjustable setpoints, deadband, normally open/closed settings

#### Power Supply

12 - 24 VDC ±20% (Standard models)
24 VDC ±10% (Smart models)

### General Specifications

<b>Environmental Rating</b>	IP65 (IEC529)
-----------------------------	---------------

#### Ambient Temperature

without cooling	0 to 70°C
with air cooling	up to 120°C
with water cooling	up to 175°C
with ThermoJacket™	up to 315°C

<b>Storage Temperature</b>	-18 to 85°C
----------------------------	-------------

<b>Relative Humidity</b>	10 to 95%, non-condensing
--------------------------	---------------------------

<b>Shock</b>	IEC 68-2-27, 50 G, 11 ms, any axis
--------------	------------------------------------

<b>Vibration</b>	IEC 68-2-27, 3 G, any axis, 11 – 200 Hz
------------------	---

<b>Dimension</b>	187 mm L x 42 mm diameter
with cooling jacket	187 mm L x 60 mm diameter

<b>Weight</b>	330 g
with cooling jacket	595 g

### Measurement Specifications

#### Temperature/Spectral Ranges

LT/LTP (Low Temp.)	-18 to 500°C	8 to 14 μm
MT (Medium Temp.)	200 to 1000°C	3,9 μm
HT (High Temp.)	500 to 2000°C	2,2 μm
G5 (Glass)	250 to 1650°C	5,0 μm
P7 (Plastic)	10 to 360°C	7,9 μm

#### Optical Resolution<sup>1</sup>

LT, MT, G5, P7	33 : 1
LTP	15 : 1 (Fresnel optics)
HT	60 : 1

<b>System Accuracy</b>	±1% or ±1,4°C <sup>2,3</sup>
------------------------	------------------------------

<b>Repeatability</b>	±0,5% or ±0,7°C <sup>3</sup>
----------------------	------------------------------

#### Temperature Resolution

LT	0,1°C
all other models	1°C

#### System Response Time<sup>4</sup>

G5	65 ms
HT	100 ms
all other models	165 ms

<b>Emissivity</b>	adjustable: 0,10 to 1,00
-------------------	--------------------------

#### Signal Processing

Standard model	emissivity
Smart model	emissivity, °C/°F, advanced peak / valley hold, averaging, background radiation compensation

<sup>1</sup> 90% energy, standard focus optics

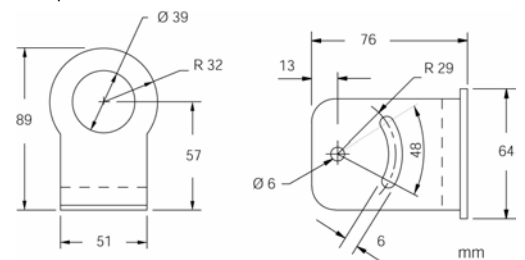
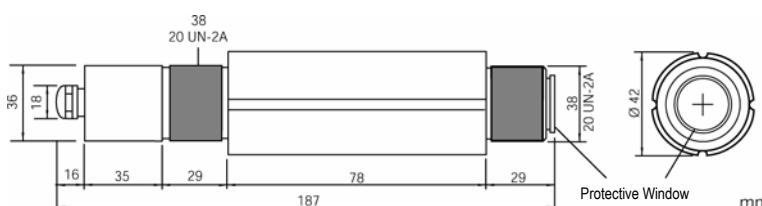
<sup>2</sup> at ambient temperature 23°C ± 5°C

<sup>3</sup> whichever is greater

<sup>4</sup> 95% value

### Sensor and Fixed Bracket

Each sensor comes with a fixed bracket, a mounting nut, and an operator's manual. All models have 4 to 20 mA output.

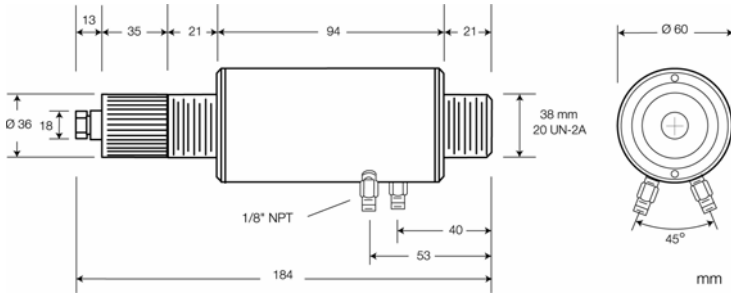


Fixed Bracket (XXXTXXACFB)

## Options

Options must be specified at time of order.

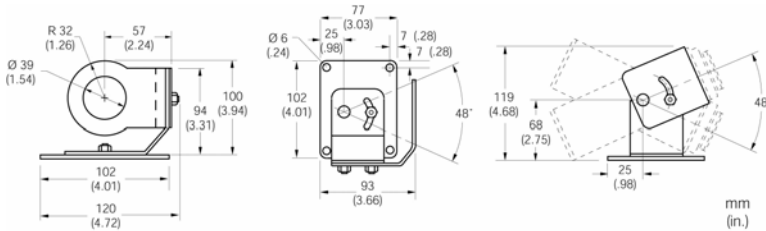
- ISO Calibration Certificate, based on NIST/DKDC certified probes (XXXDKDCERT)
- Intrinsically-Safe Rating, PTB-approval (...IS1)
- Water/Air Cooled Housing incl. Air Purge Collar (...W)



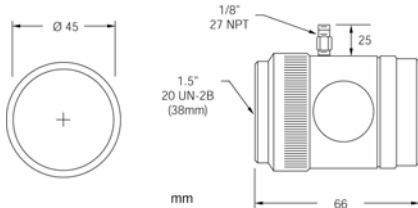
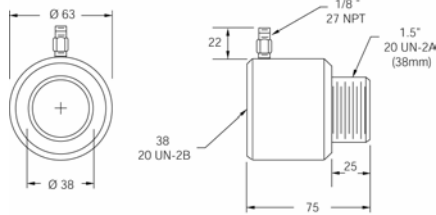
## Accessories

- Sighting Viewer Tool (XXXTXXACSV)
- Protective Window according to spectral range (XXXTXACTW...)
- ThermoJacket: extra rugged cast metal housing for thermal/mechanical environmental protection (RAYTXXTJ3M), see also ThermoJacket datasheet

## Adjustable Bracket (XXXTXXACAB)



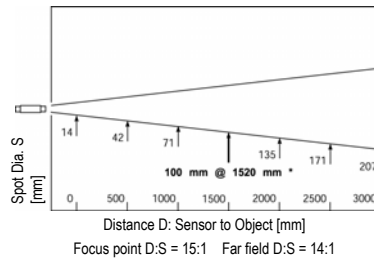
## Air Purge Collar (XXXTXXACAP)



**Right Angle Mirror** for measuring targets at right angles to sensor axis (XXXTXXACRA)

## Optical Specifications

### Standard Focus: LTP models



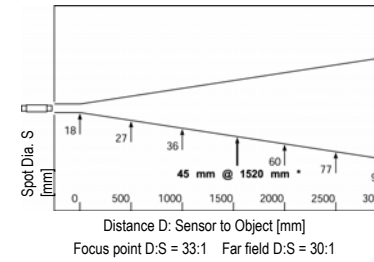
### Close Focus Option

D (mm)	S (mm)
0	10
50	7,5*
150	115

D:S = 7:1, Far Field = 4:1

\*focus point

### Standard Focus: LT, MT, G5, P7 models



### Close Focus Option 1

D (mm)	S (mm)
0	16
76	2,5*
500	92

D:S = 30:1, Far Field = 5:1

### Close Focus Option 2

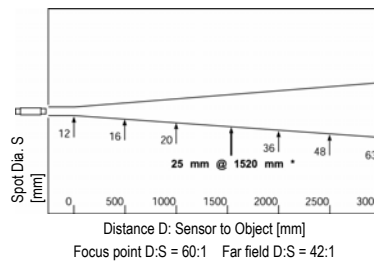
D (mm)	S (mm)
0	17
200	6,4*
450	32

D:S = 32:1, Far Field = 10:1

\*focus point

Close Focus not available for G5 and P7

### Standard Focus: HT models



### Close Focus Option 1

D (mm)	S (mm)
0	11
76	1,3*
500	66

D:S = 60:1, Far Field = 7:1

### Close Focus Option 2

D (mm)	S (mm)
0	11
200	3,4*
450	22

D:S = 60:1, Far Field = 14:1

\*focus point

## Remote Communication Kit

Required for smart models, the kit (RAYTXSCAL) includes the HART/RS-232 adapter and the Windows DataTemp Multidrop software package. One kit serves multiple sensors. Requires RS-232 serial port voltage and Windows 95/98, or Windows NT/2000.

[www.raytek.com](http://www.raytek.com)

for up-to-the-minute features

57501, Rev. D, 08/2003 – Raytek, the Raytek Logo, Thermalert and DataTemp are registered trademarks of Raytek Corporation. Specifications subject to change without notice. Raytek is ISO 9001:2000 certified.

### Worldwide Headquarters

Raytek Corporation  
Santa Cruz, CA USA  
Tel: +1 831 458 – 1110  
+1 800 227 – 8074  
Fax: +1 831 458 – 1239  
[automation@raytek.com](mailto:automation@raytek.com)

### Raytek United Kingdom

Milton Keynes, UK  
Tel: +44 1908 630 800  
Fax: +44 1908 630 900  
[ukinfo@raytek.com](mailto:ukinfo@raytek.com)

### European Headquarters

Raytek GmbH  
Berlin, Germany  
Tel: +49 30 47 80 08 - 0  
Sales: - 400  
Fax: +49 30 4 71 02 51  
[raytek@raytek.de](mailto:raytek@raytek.de)

### Raytek France

Palaiseau, France  
Tel: +33 164 53 15 40  
Fax: +33 164 53 15 44  
[info@raytek.fr](mailto:info@raytek.fr)



**RoMiotto** RoMiotto Instrumentos de Medição Ltda  
Instrumentos de Medição

Rua São Leonardo, 33 - Sala 05 - Freguesia do Ó - São Paulo - SP  
Cep: 02803-000 - Fone: (11) 3976-4003 - Fone: (11) 3999-7737

Site: [www.romiotto.com.br](http://www.romiotto.com.br) - E-mail: [info@romiotto.com.br](mailto:info@romiotto.com.br)

**Raytek**